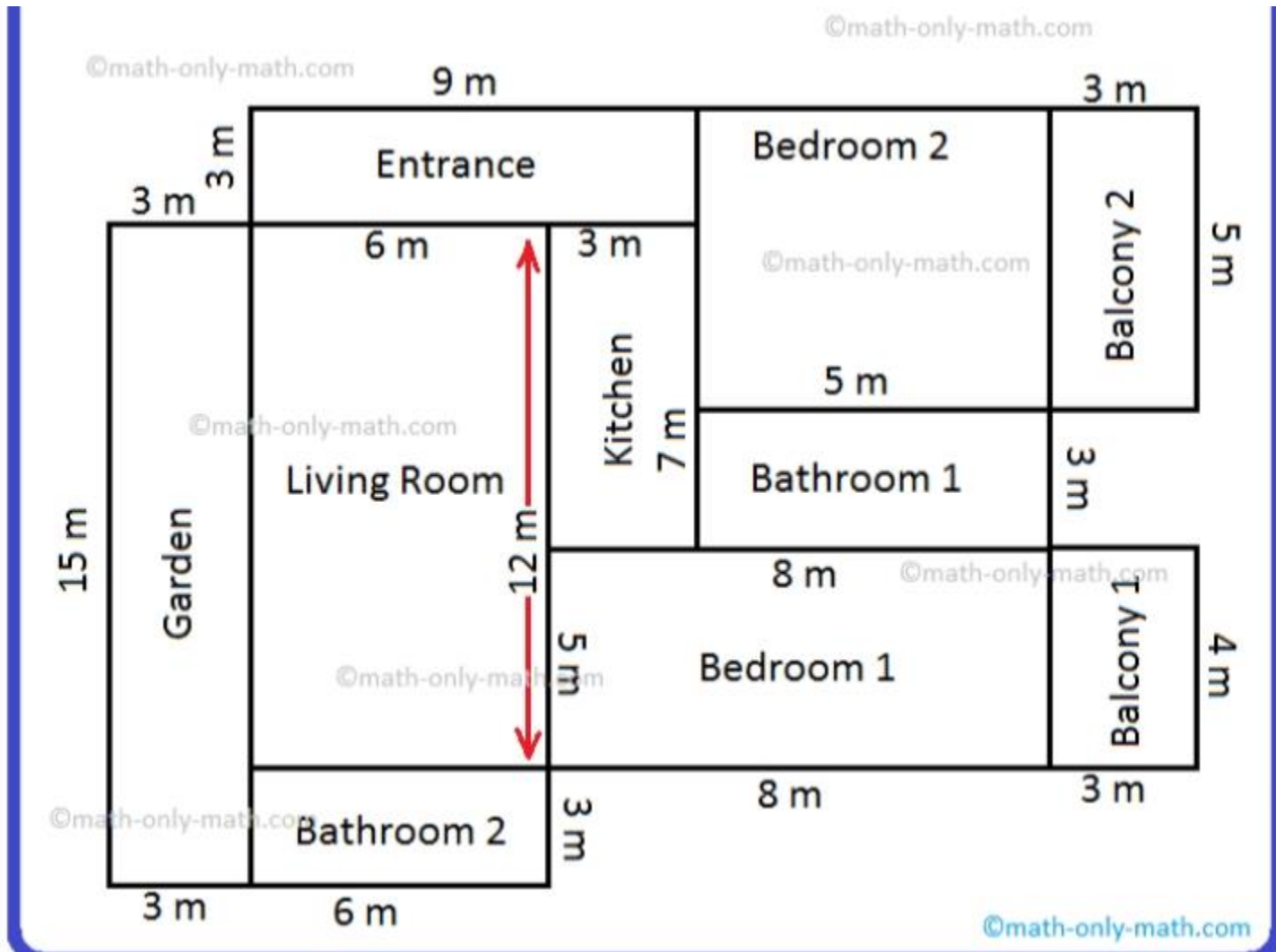


## CASE STUDY 2

The following is the house floor plan of Sunita's house:-



- 1) What is the perimeter of the Living Room?
  - a) 30 m
  - b) 35 m
  - c) 36 m
  - d) 40 m
- 2) What is the area of Bedroom 2?
  - a) 20 m square
  - b) 30 m square
  - c) 25 m square
  - d) 35 m square
- 3) What is the area of the garden?
  - a) 40 m square
  - b) 36 m square
  - c) 46 m square
  - d) 45 m square
- 4) Among the following, which has the bigger area?
  - a) Balcony 1
  - b) Balcony 2
  - c) Entrance
  - d) Garden
- 5) Sunita wants to tile the floor of Bathroom 2 at Rs 70 per square meter. Find out how much Sunita have to pay for it?
  - a) Rs 1000
  - b) Rs 2060
  - c) Rs 1260
  - d) Rs 960